

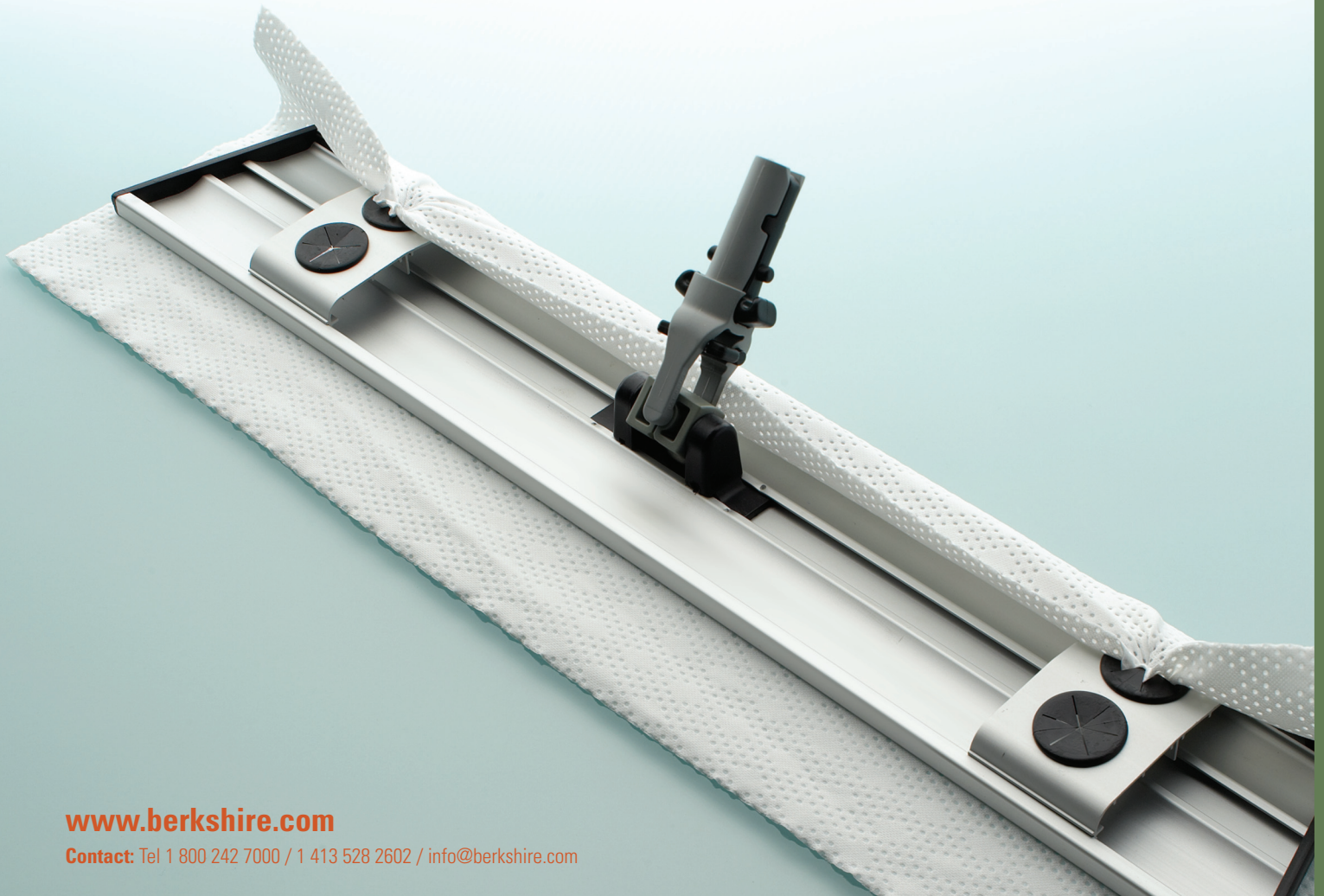
## Mop Systems

### **Quick, clean and easy**

Efficient cleaning of floors, walls and other large surfaces is critical to the overall cleanliness of the production environment.

BCR<sup>®</sup> Mop Systems replicate the most effective way to clean a surface – wiping. Berkshire's mop systems are easy to use, highly effective and quick. The system is very flexible,

combining a wide range of alternative Mop Wipers designed for particular levels of cleanliness with a range of Flat Mop Heads.



# BCR® Flat Mop Heads

## Applications

ISO Class 3–7 / Floors, walls and ceilings

Berkshire's Flat Mop Head is light and easy to maneuver, even with wet wipers attached. The head is made of high quality anodized aluminum, which is clean, light and durable.

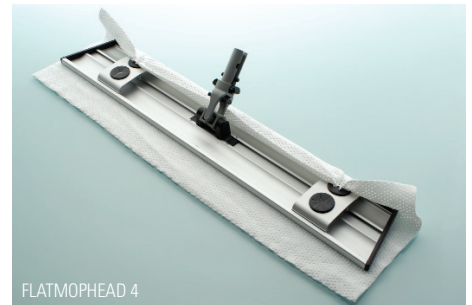
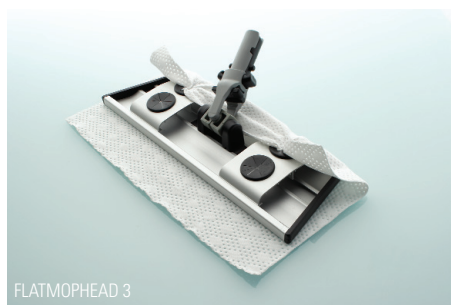
The stainless steel springs or plastic eyes hold multiple mop wipers in place and are very easy to operate. The bottom of the mop is smooth and has no lines or grooves where bacteria or other contamination can settle.

BCR® Flat Mop Head can be autoclaved for use in sterile applications.\*

### Quick overview of BCR Flat Mop Head:

Flat Mop Head	Wiper attachment method	Size	Mops/pk	Pks/cs	Number
<b>Flat Mop Head 2</b>	Steel Wires	9x58cm	1	10	BCR.MOP2.10
<b>Flat Mop Head 3</b>	Plastic "Eyes"*	9x28cm	1	10	BCR.MOP3.10
<b>Flat Mop Head 4</b>	Plastic "Eyes"*	9x58cm	1	10	BCR.MOP4.10
<b>Spare Plastic Eye</b>	N/A	N/A	40 pcs/pk	10	BCR.RPE.40

\*Eyes are not autoclavable



# BCR® Flat Mop Handles

## Basic Fixed Handle

- This anodized aluminum handle is lightweight, strong and easy to clean.
- The handle is 140cm long.

## Telescopic Handle

- This anodized aluminum handle is very strong but lightweight.
- The handle extends from 95cm to a maximum length of 180cm.



### Order information:

Product	Number	Size	Handles/pk	Pks/cs
<b>Basic Fixed Handle</b>	BCR.FHANDLE.10	140cm	1	10
<b>Telescopic Handle</b>	BCR.T2HANDLE.10	95–180cm	1	10

# BCR<sup>®</sup> Flat Mop Wipers

## Applications

ISO Class 3–7 / Floors, walls and ceilings / Wet or dry with a range of solvents

Berkshire Mop Wipers are designed to minimize and remove cleanroom contamination in a wide range of applications and are manufactured to the highest quality standards, offering consistent performance every time. Mop Wipers range from critical sealed edge 100% knitted polyester to controlled process nonwoven wipers.

All the wipers are disposable and measured to fit the Mop Head system. More than one wiper can be attached to the mop head at a time. After mopping the area the outer wiper can be disposed of and the remaining wipers are ready for the next mopping phase. This guarantees a fresh wiper is used for each new phase, maximizing the efficiency of the cleaning.

### Non-standard options:

Other wipers are available in non-standard sizes in both dry and presaturated formats. Please contact us for details of these and other non-standard options.

### MicroSeal SuperSorb – Thick Dry Wiper – Sealed-edge

- ISO Class 4 (Class 10) cleanroom laundered
- 100% continuous filament sealed-edge polyester
- Thick 2-ply fabric
- Ultrasonically sealed on 4 edges
- Most absorbent polyester wiper available
- Clean, soft and pliable edges
- Sterilizable by autoclave and gamma irradiation
- Lot number on each pack for traceability
- Vacuum packed and double packed



### Durx 670 – Dry Wiper – Nonwoven

- Recommended for use in ISO Class 5–7 (Class 100-10,000)
- Hydroentangled cellulose/polyester
- Very absorbent and low in particles and fibers
- Smooth, durable, with no secondary binders
- Sterilizable by autoclave and gamma irradiation
- Lot number on each pack for traceability



### SatPax 670

- Presaturated Durx 670 with EU pharmacopoeia grade IPA and deionized water
- Sterilizable by gamma irradiation
- Lot number on each pack for traceability
- Excellent strength and durability
- Peel and reseal pouches allow for single wiper use



### Order information:

Product		Number	Size	Shts/pk	Pks/cs
<b>MicroSeal SuperSorb</b>		MSSS.0824.12	8x24 (20x60cm)	25	12
<b>MicroSeal SuperSorb</b>		MSSS.0812.12	8x12 (20x60cm)	50	12
<b>Durx 670</b>		DR670.0824.10	8x24 (20x60cm)	100	20
<b>Durx 670</b>		DR670.0812.20	8x12 (20x60cm)	100	20
<b>SatPax 670</b>	70% IPA/ 30% DI H <sub>2</sub> O	SPX670M.004.12	9x23 (23x58cm)	25	12
<b>SatPax 670</b>	50% IPA/ 50% DI H <sub>2</sub> O	SPX670M.005.12	9x23 (23x58cm)	25	12

# Vital Statistics

Recommended for use in:	ISO Class 3 (Class 1) Cleanroom Applications and above	ISO Class 5 (Class 100) Cleanroom Applications and above
	MicroSeal SuperSorb	Durx 670
<b>Physical Properties</b>		
Basis Weight (g/m <sup>2</sup> )	258	69.5
Caliper (µm)	828	255
<b>Fibers</b>		
(≥100µm/cm <sup>2</sup> )	0.16	180
<b>Particles (≥ 0.5µm)</b>		
Biaxial Shake (x10 <sup>3</sup> /cm <sup>2</sup> )	1.4	23
<b>Absorbency</b>		
Absorbency (cc/m <sup>2</sup> )	925	313
Spec. Abs. (cc/g)	3.6	4.6
Time to 1/2 Sorb. (secs)	1	3
<b>Extractables (%)</b>		
H <sub>2</sub> O (%)	0.0097	0.079
2-Propanol (%)	0.053	0.024
<b>Ions (ppm)</b>		
Na <sup>+</sup>	0.12	17
K <sup>+</sup>	0.010	1.0
Ca <sup>++</sup>	0.027	1.8
Mg <sup>++</sup>	0.010	1.2

## Other products in the Berkshire line



Face Masks



Documentation Systems



Validated Sterile Wipers



Glove Liners



Swabs

**Berkshire**  
ENGINEERED CLEAN

### America

Tel 1 413 528 2602  
Fax 1 413 528 2614  
usa@berkshire.com

### Europe

Tel 44 (0) 870 757 2877  
Fax 44 (0) 870 757 2878  
enquiries@berkshire.uk.com

### SE Asia

Tel 65 6252 4313  
Fax 65 6252 4312  
berkshire\_asia@pacific.net.sg

### Japan

Tel 81 45 477 4481  
Fax 81 45 477 4484  
master@berkshire.co.jp