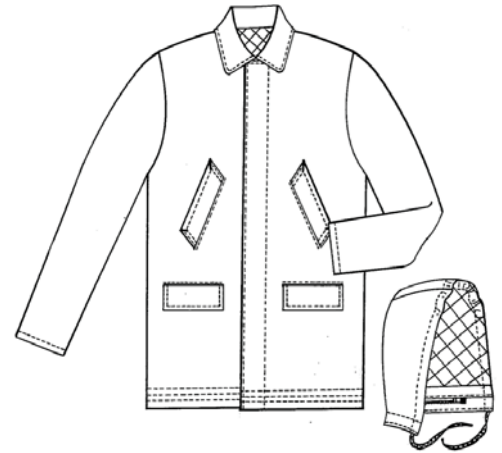


QUILT LINED PARKA WITH ZIP OFF HOOD

When it's cold outside, you'll want this hooded parka to keep you warm. With knit inside cuffs, an inner drawstring, and polyester fiber fill, our sturdy JB34 is just what you are looking for. It comes in 3 colors and a wide range of sizes, up to 7XL. Stands up to industrial wash.



Details

- * 8.5 oz. twill, 65/35 poly/cotton shell
- * Pre-cured durable press
- * 8 oz. polyester fiber fill insulation, nylon lining
- * Snap-down fly front over heavy duty zipper
- * Inside knit wristlets and inside drawstring
- * 2 upper slash & 2 lower flap pockets
- * 34" long for size large
- * Washable, detachable quilt lined hood

Sizes

S-7XL; Longs S-4XL



Hood Details

Style#

JB34

JB34 is shown in NB (Navy)

Colors

