
MALE LAB COAT

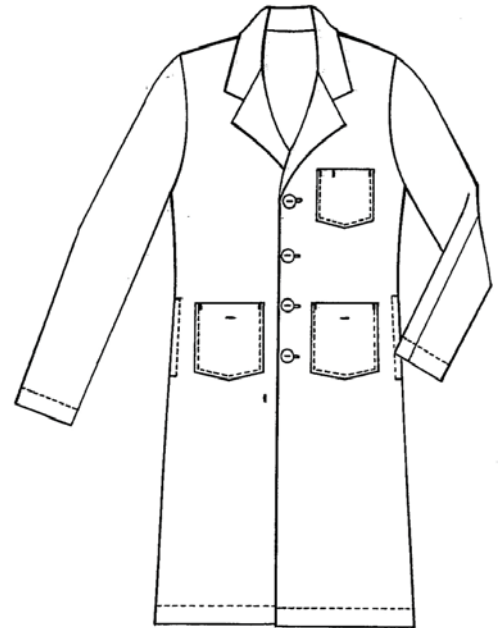
Designed for durability and comfort, our Male Lab Coat is the perfect choice for any medical professional. It features one left breast pocket with tacked pencil divider and two large lower pockets for all of your essentials. Stands up to industrial wash.

Details

- * 5.25 oz. poplin, 65% polyester/35% cotton
- * Pre-cured durable press
- * 4 pearl buttons with one piece notched lapel
- * Left breast pocket with tacked pencil divider
- * 2 large lower pockets
- * 40" long for size 40
- * Side vent openings for access to inside

Sizes

White 30-60; Graphite 32-54; Lt. Blue, Navy, Tan 32-56
Longs available in White



Style#

LAMDC

LAMDC is shown in WH (White)



Colors

