

---

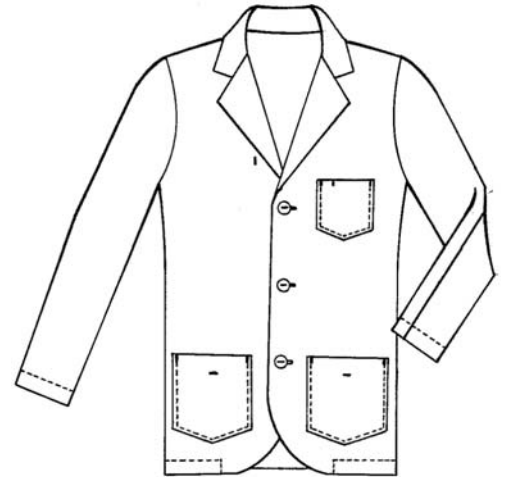
# LAPEL/COUNTER COAT

Featuring three pearl buttons and a Blazer style, our Lapel/Counter Coat will give any professional a sophisticated look. To provide comfort and durability, it is manufactured from American made, 65% polyester/35% cotton fabric. With a left breast pocket and two large lower pockets, the coat has plenty of room for all of your necessities. Stands up to industrial wash.

---

## Details

- \* 5.25 oz. poplin, 65% polyester/35% cotton
- \* Pre-cured durable press
- \* 3 pearl buttons with one piece notched lapel
- \* Left breast pocket with tacked pencil divider
- \* 2 large lower pockets
- \* 30" long for size 42
- \* Blazer type styling



## Sizes

White 30-56; Red 32-52; Gold, Graphite, Royal 32-54; Kelly, Lt. Blue, Maroon, Navy, Tan 32-56

## Style#

# LCDC

LCDC is shown in GG (Graphite)



## Colors

